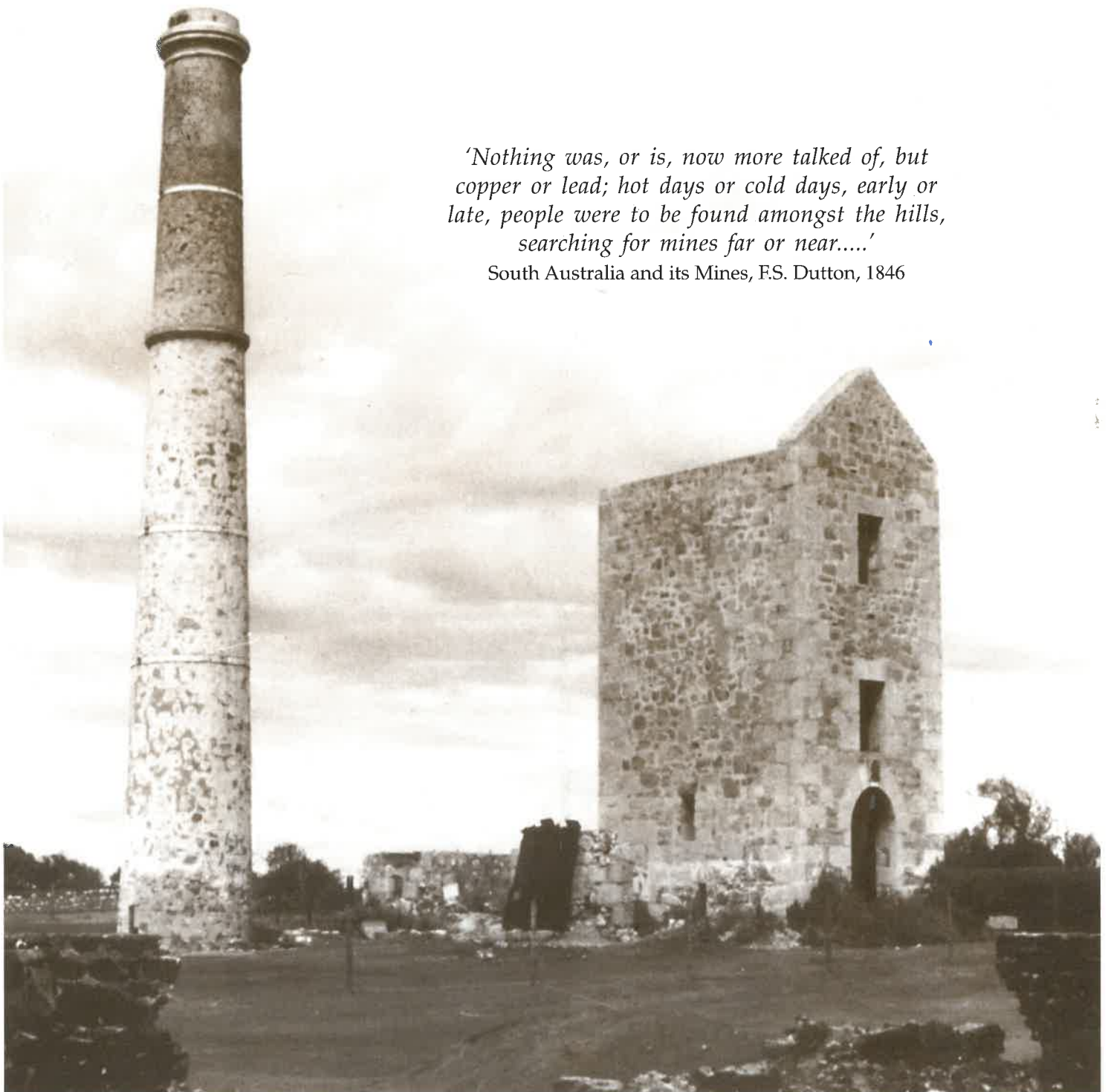


Hit the Trail

Rediscover South Australia's Copper Heritage

*'Nothing was, or is, now more talked of, but
copper or lead; hot days or cold days, early or
late, people were to be found amongst the hills,
searching for mines far or near....'*

South Australia and its Mines, F.S. Dutton, 1846



Moonta chimney and engine house

'I ascended this little hill, prior to returning home, for one last survey of the surrounding country; the very spot I pulled the horse up at, was beside a large protruding mass of slate, strongly tinged and impregnated with the green carbonate of copper. My first impression was that the rock was covered with a beautiful green moss, but, on getting off the horse, I quickly found, by breaking off a piece from it, that the tinge was as bright in the fracture as on the surface'. South Australia and its Mines, Francis Dutton, 1846

A BRIEF HISTORY OF COPPER MINING

Kapunda

- 1844 Mining commenced by hand shovelling outcrops.
- 1845 Underground mining commenced
- 1848 First Cornish beam engine in Australia was erected
- 1849 First smelting furnace erected. By 1862, 36 smelter men were being employed.
- 1850 Second Cornish beam engine erected
- 1852-55 Mine closed due to the Victorian gold rush. Re-opened and developed quickly with peak production being reached in 1861.
- 1866 Open cut mining commenced - 'Lanyon open cut'. Proved uneconomical. This was the first mine in Australia to implement this method of mining.
- 1878 Mine closed. Cornish beam engines were sold to Captain Hancock and moved to the Moonta Mines

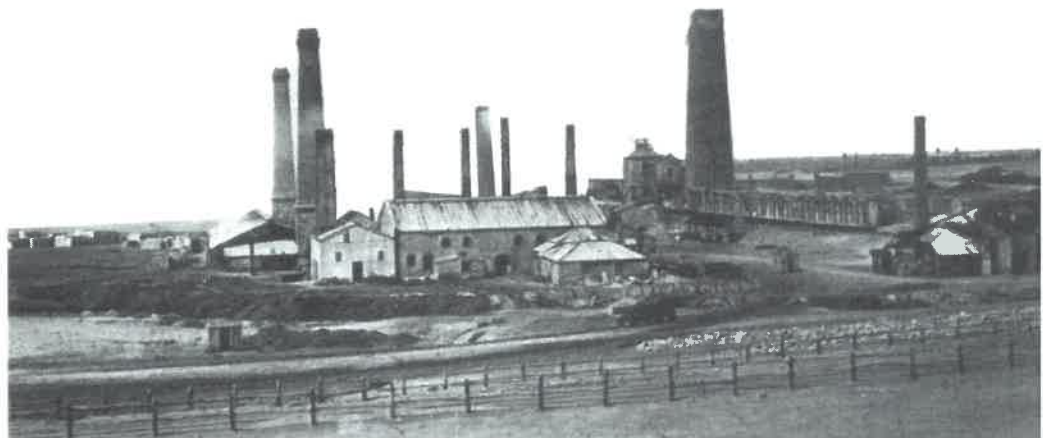
Burra

- 1846 Mining commenced
- 1849 Patent Copper Company (Burra) acquired a lease to smelt ore. By October, 6 furnaces were operating. At the mines peak there were 21 in operation.
- 1850 The largest mine in Australia
- 1859 The number of men and boys employed exceeded 1170
- 1860 Decline commences
- 1870 Open cut mining commences
- 1877 Mine closed.
- 1845-51 Princess Royal Mining Company operated

Copper Triangle (Walleroo, Moonta, Kadina)

- 1861 Ryans Shaft sank to depth of 36 metres
- 1862 Matta Mine commenced
- 1863 Dominicks Shaft commenced. Reached depth of 265 metres
- 1863 Construction commenced on Hughes Engine House. Completed 1865
- 1863 Mechanical workshops established
- 1864 Ryans Engine erected, also operated Dominicks Shaft
- 1864 Mine railway built and connected to Moonta - Wallaroo line
- 1870 Matta Mine closed due to constant flooding
- 1871 New concentrating machinery including Hancock jig erected
- 1890 Ryans mine closed
- 1891 Horses replaced by small locomotives on mine railway system
- 1906 Engine house demolished
- 1923 Hughes Mine closed
- 1930 Moonta Mining Scheme commenced to relieve unemployment
- 1938 Mine closed due to lack of ore

Hughes was experience frc Wallaroo and Mo overland from E wheel barrow fol then west tow located, arriving 'wherever the Cousin Jack

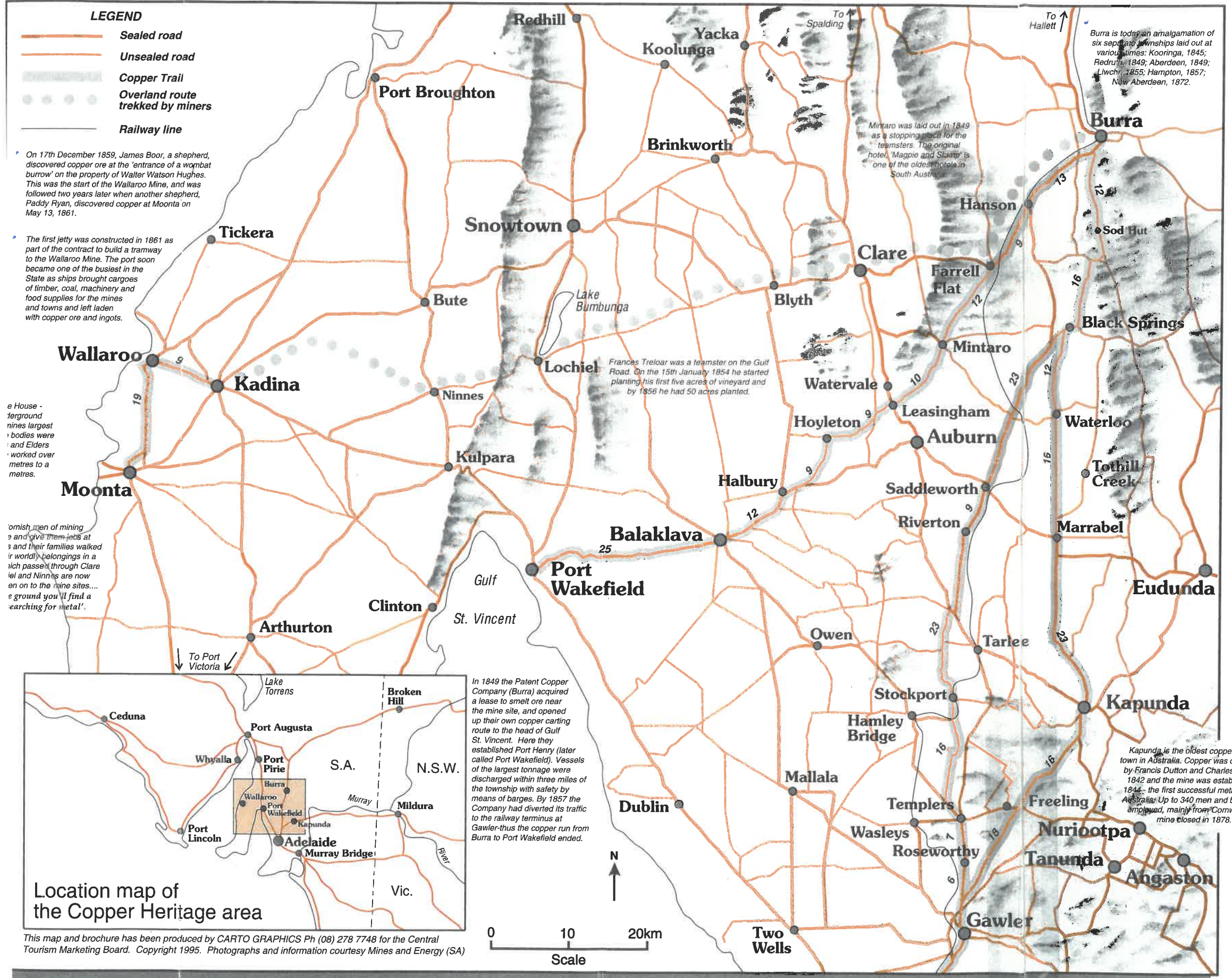


Walleroo smelters

Copper Trail Map

In 1843, a mineral discovery occurred on the Burra Creek 'whose astonishing richness...threw all other fields into the shade', George Sutherland. Thomas Pickett had come across an outcrop of copper, as previously had another shepherd, William Streat.

Thomas Street cottages, erected in 1846; Paxton Square Cottages, built in 1849; and, Tiver's Flows begun in 1856, are fine examples of early domestic architecture.



COPPER TRAIL TOURIST DRIVES

Copper Trail (70kms)

Kapunda-Gawler-Dry Creek-Port Adelaide

Copper was taken by bullock dray from Kapunda to Port Adelaide for shipment. The journey took two and a half days with the dray being pulled by teams of six oxen during the dry weather and eight during the winter.

Great Northern Route (160kms)

Burra-Sod Hut-Black Springs-Saddleworth-Riverton-Stockport-Templers Inn-Gawler-Dry Creek-Port Adelaide

Burra-Sod Hut-Black Springs-Waterloo-Marrabel-Kapunda-Gawler-Dry Creek-Port Adelaide

Burra-Sod Hut-Black Springs-Apoinga-Tothill Creek-Kapunda-Gawler-Dry Creek-Port Adelaide

The journey from Burra to Port Adelaide took between 8 and 10 days for a team of 6 to 8 bullocks. By 1846 there were 400 drays operating on the Great Northern Route. On the return trip they carried supplies, coal, machinery etc for the mine and townships.

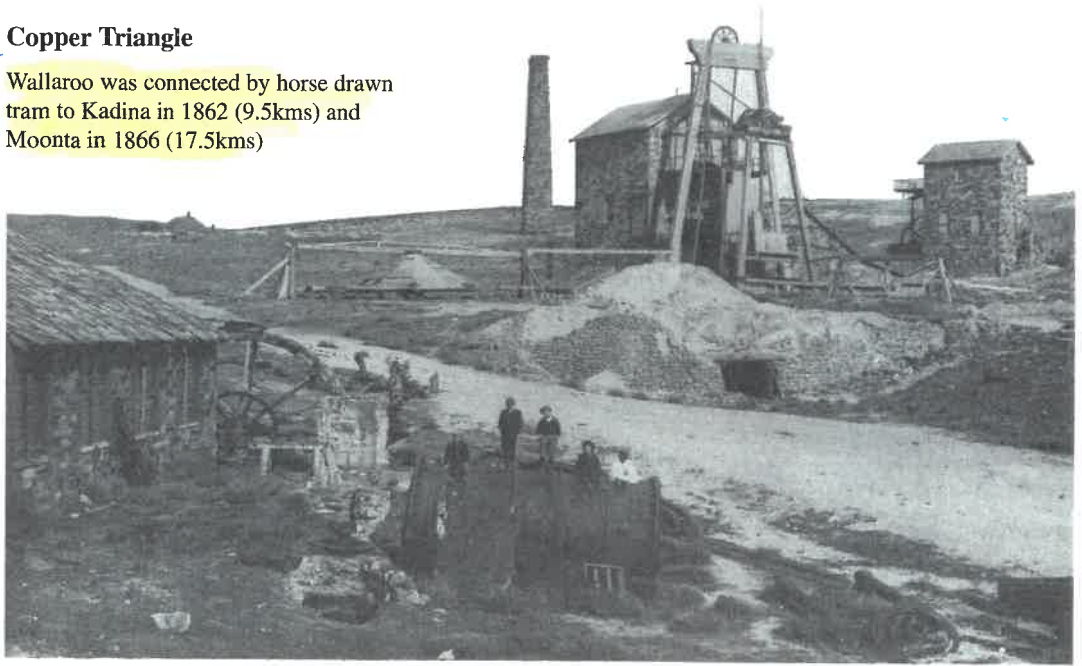
The Gulf Road (96kms)

Burra-Hanson-Mintaro-Leasingham-Auburn-Hoyleton-Halbury-Balaklava-Port Wakefield

At any time up to 400 bullock drays used this road. The first use of mules in Australia for transportation took place on this road. They had been imported with their handlers from Chile and could travel up to 12kms a day.

Copper Triangle

Walleroo was connected by horse drawn tram to Kadina in 1862 (9.5kms) and Moonta in 1866 (17.5kms)



Burra Mine

WHY WAS COPPER IMPORTANT?

'From this sea of copper, men whose arms are well covered with cloths or sacking, ladle out the copper into moulds'.

In the 19th century the industrial revolution was underway in England. Copper conducted heat well, was easy to shape and easy to draw into wire. It was also durable and resistant to corrosion and could be used for boilers, tubing, early steam engines, locomotives, cooking implements, bolts, sheathing for the hulls of wooden ships and coins. Copper was also used by artisans in the Asian countries for making brass and copperware.



Kapunda Mine

TOURING INFORMATION

Kapunda

Tourist Drive 17

Places of interest

Kapunda Historical Society Museum, Hill Street
Bagot's Fortune Mine Interpretation Centre, Hill Street
Mine Walk Trail, off Perry Road
Map Kernow the miner, Adelaide Road
Information Centre, Hill Street. Tel (085) 36 2699
For further information, District Council of Kapunda. Tel (085) 66 2101

Publications of interest

Discovering Historic Kapunda-Dept Mines and Energy (SA)
History of Kapunda, Rob Charlton
Kapunda-A Walking Tour of the Town

Burra

Tourist Drive 16

Places of interest

Burra Passport/Burra Heritage trail-covers a distance of 11 kilometres giving the opportunity to visit over 40 sites.
Morphett's Engine Museum, Mine site
Bon Accord Mining Complex, Cnr West Street and Linkson Street
Burra Tourist Information Centre. Tel (08) 8892 2154

Publications of interest

Discovering Historic Burra, Dept Mines and Energy (SA)
Welcome to Burra
The Gulf Road
The Burra Record
The Monster Mine, Ian Auhl

Clare

Clare Tourist Information Centre. Tel. (08) 8842 2131

Publications of interest

Clare, A District History, Robert J Noye
Historic walk of Clare

Mintaro

Mintaro, State Heritage Area, Dept Environment and Planning

Auburn

Walk with History at Auburn

Watervale

Historic walk of Watervale

Riverton

A Brief History of Riverton and The Gilbert Valley

Walleroo

Tourist Drive 37

Places of interest

Walleroo Heritage and Nautical Museum, Old Post Office, Jetty Road
Walleroo Tourist Information Centre, Town Hall, Irwin Street.

Publications of interest

Discovering Historic Wallaroo-Dept. Mines and Energy (SA)
An Historic Walk around Wallaroo
Copper to Gold-A History of Wallaroo, Rex Wiltshire
Mid North and Yorke Peninsula, Stuart Nicol (published by RAA)

Moonta

Heritage Trail 38

Places of interest

Moonta Mines State Heritage area and National Trust Museum, Verran Tce
Moonta Tramways, Blanche Terrace
Upstreet Moonta Nostalgia Heritage Photographic display
Tourist Information Centre, Town Hall, George Street

Publications of interest

Discover Historic Moonta-Dept Mines and Energy (SA)
Men of the Mines, Keith Bailey
Walk with history-Up Street Moonta
No monument of stone, Alan L Peters
Ships of Yorke Peninsula, Ronald Parsons

Kadina

Heritage Trail 40

Places of interest

Matta House Museum Complex
Self guided walk of Wallaroo Mines, Newland Road and Lipson Avenue
Kernewek Lowender, a festival every alternate year eg, 95, 97, 99
Kadina Tourist Information Centre, Taylor Street Tel (08) 8821 2093

Publications of interest

Discover Historic Kadina-Dept Mines and Energy (SA)
Harry Kneebone-A Son of 'Little Cornwall', Joan Tiver
The Wallaroo and Moonta Mines
Copper City Chronicle-A History of Kadina, Keith Bailey
The Wallaroo Mine 1860-1923, H.K. Bailey
A look at the heritage of Kadina, Australia's Little Cornwall, Oswald Pryor



Miners clothes were made of heavy drill; resin hardened felt hats protected their heads and a candle provided light underground. The candle was attached to the brim of the hat with a lump of clay - spare tallow candles hung by the wick around his neck.

ACCOMMODATION GUIDE

Kapunda

Ford House

80 Main Street
Tel/Fax (085) 66 2280

1860's two storey hosted bed and breakfast guest house located in the town where copper was first mined in the colony of South Australia.

Burra

Burra Camping Centre

Cnr Ludgvan and Sancreed Streets
Tel (08) 212 4066

Group accommodation available in the historic Redruth Centre and/or Old Courthouse Hotel.

Burra Heritage Cottages Tiver Row

1 Young Street
Tel (08) 8892 2461

Enjoy the past with the luxuries of the present

Burra Hotel

5 Market Square
Tel (08) 8892 2389

Country hotel hospitality located in the heart of historic Burra

Copperville

7 Mount Pleasant Road
Tel (08) 8892 2648

Heritage cottage accommodation from which to explore the historic past

Paxton Square Cottages

Kingston Street
Tel (08) 8892 2622

Erected in 1849 these cottages are one of the earliest examples of company accommodation in Australia

Hallett

Tooralie Homestead and Lodge

North of Burra
Tel/Fax (08) 8894 2067

Traditional Australian farm hospitality situated in the ranges east of Hallett.

Clare

Clare Central Motel

325 Main North Road
Tel (08) 8842 2277

Centrally located motel accommodation

Green Gables Bed and Breakfast

24 Mill Street
Tel (08) 8842 2576

Beautiful old stone house encircled by magnificent woods and gardens

Miss Nobles

PO Box 220
Tel (08) 8843 4326

Situated in the heart of the Clare Valley wine region

Bungaree Station

Clare - Port Pirie Road
Tel (08) 8842 2677

Heritage cottage and shears quarters. Accommodation available at this historic settlement.

Mintaro

Martindale Hall

PO Box 21
Tel (08) 8843 9088

Grand country accommodation and a noted tourist attraction

Tickles Cottage

Tel (08) 8843 9017

Heritage accommodation located near the route used by the bullock drays to Port Wakefield

Spalding

Geralka Rural Farm

Clare - Spalding Road
Tel (08) 8845 8081

Experience underground displays, the bell signals, the shaft cage, and ride the mine train in the replica of the Wheel Sarah Copper Mine.

Leasingham

Crawley's Leasingham Bistro

Cnr Mintaro and Old Port Wakefield Road
Tel (08) 8843 0136

Ideal spot to break the journey for a delicious meal featuring local produce

Walleroo

Southern Lodge Motel

18 John Terrace
Tel (08) 8823 2291

Country hospitality located in the heart of the Copper Triangle

Moonta Bay

Moonta Bay Patio Motel & Restaurant

196 Bay Road
Tel (08) 8825 2473

A short drive from the Moonta Mines and other historic relics

Moonta Bay Caravan Park

Foreshore
Tel (08) 8825 2406

Overlooking the waters which carried the mighty ships that departed with the wealth of the region

Port Hughes

Port Hughes Caravan Park

Foreshore
Tel (08) 8825 2106

Caravanners paradise from which to explore the copper heritage of the region

Kadina

Kadina Caravan Park

Lindsay Terrace
Tel (08) 8821 2259

The original copper mine upon which the wealth of the region was built is located nearby.

Kadina Gateway Motor Inn

Adelaide Road / PO Box 319
Tel (08) 8821 2777 or Fax (08) 8821 1790

Copper Triangle hospitality at it's best.

Port Victoria

Bay View Holiday Flats

29 Davis Terrace
(08) 8834 2082

Located on the western coast of the Peninsula a short drive south of the Copper Triangle. An ideal location from which to explore the historic shipwrecks of the Yorke Peninsula.



Cottages near Moonta mines